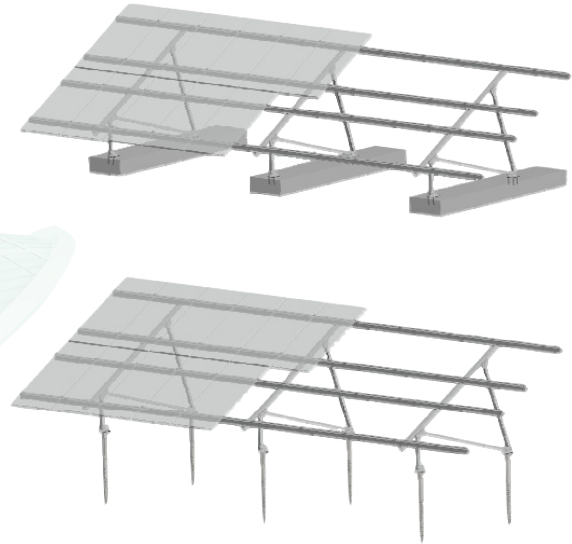
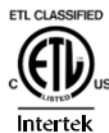


PvMax



- ▶ **Ground mount system ballasted or connected to helical piles or ground screws**
- ▶ **Certified to LTR AE-001**
- ▶ **Ideal for landfill sites or residential locations**
- ▶ **Complete structural analysis provided, including concrete foundation calculation with attachment recommendation**
- ▶ **Short mounting time with partially pre-assembled support kits and no heavy machinery required**
- ▶ **Proprietary S-Profile rail allows for long spans, reducing the required number of supports and concrete foundations needed**



The PvMax is a ballasted ground mount system which offers an attractive design with long-lasting and durable system components. The system offers photovoltaic (PV) mounting solutions in areas where pier driven posts are not possible, as is the case in residential locations or on landfill sites.

The core strength of the PvMax lies in the large spans achieved using the uniquely designed S-Profile rails. The S-Profile rails enable long spans, resulting in a low number of required supports, thereby reducing the number of concrete foundations needed. Made of aluminum, the PvMax is easily installed requiring no heavy machinery.

APPLICATIONS

Using cast-in-place concrete block foundations, the PvMax is ideal for:

- Small and medium-sized PV systems
- When pile driven posts are not possible (e.g., sites where soil is too soft or too rocky, landfill sites, or inaccessible locations)
- Repeatable residential ground-mount installations



OPTIMIZATION OF CONNECTIONS

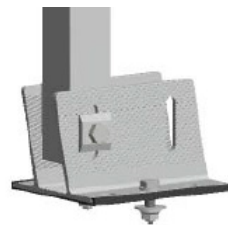
- Optimized profile geometries
- Wider spans, which potentially reduce the number of supports and foundations
- Partially pre-assembled support kits
- Ease-of-assembly
- Optimum price: performance ratio
- Attractive design



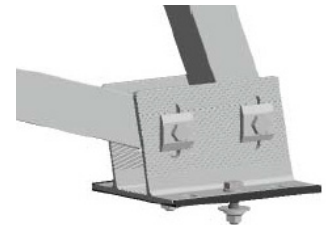
Front:
2 Concrete anchors



Rear:
4 Concrete anchors



Front:
2 Ground screw anchors

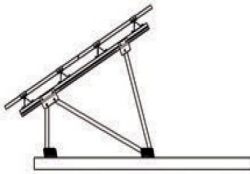


Rear:
2 Ground screw anchors

Concrete anchors & Ground screw hardware not included (16 mm punched holes).

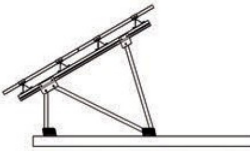
MOUNTING OPTIONS

Standard 2V @ 20°, 25°, 30°, 35°, 40° or 45°



PvMax 2V

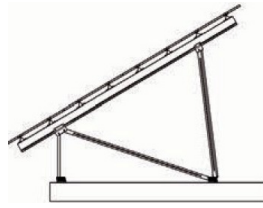
Custom



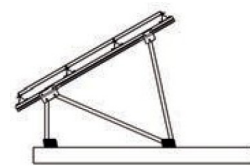
PvMax 2V



PvMax 3V



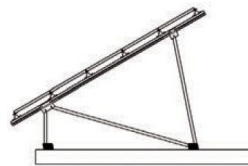
PvMax 4V



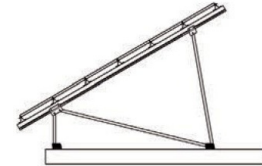
PvMax 3H



PvMax 4H



PvMax 5H



PvMax 6H

TECHNICAL DATA

Material	Module bearing profiles: Aluminium–S-Series profiles Girders: Aluminium–BF-Series profiles Supports: Aluminium–RHP profiles Screws / nuts: A2 - 70 / A4 - 80
Foundation	Concrete (The structural analysis of the system features specifications on reinforcement and dimensioning); Ground screws: compatible with ground screws, pending engineering review.
Structural analysis	Structural analysis according to current NBC and provincial codes Structural analysis with specifications on foundation dimensioning as well as an anchor recommendation depending on the respective wind and snow loads that have to be considered.
Warranty	25-year Standard limited manufacturing warranty.



For more information, visit www.schletter-group.com
or send us an email to rooftopNA@schletter-group.com.