

SCHLETTER

The Solar Mounting Group

CLAMPFIT

PRODUCT SHEET



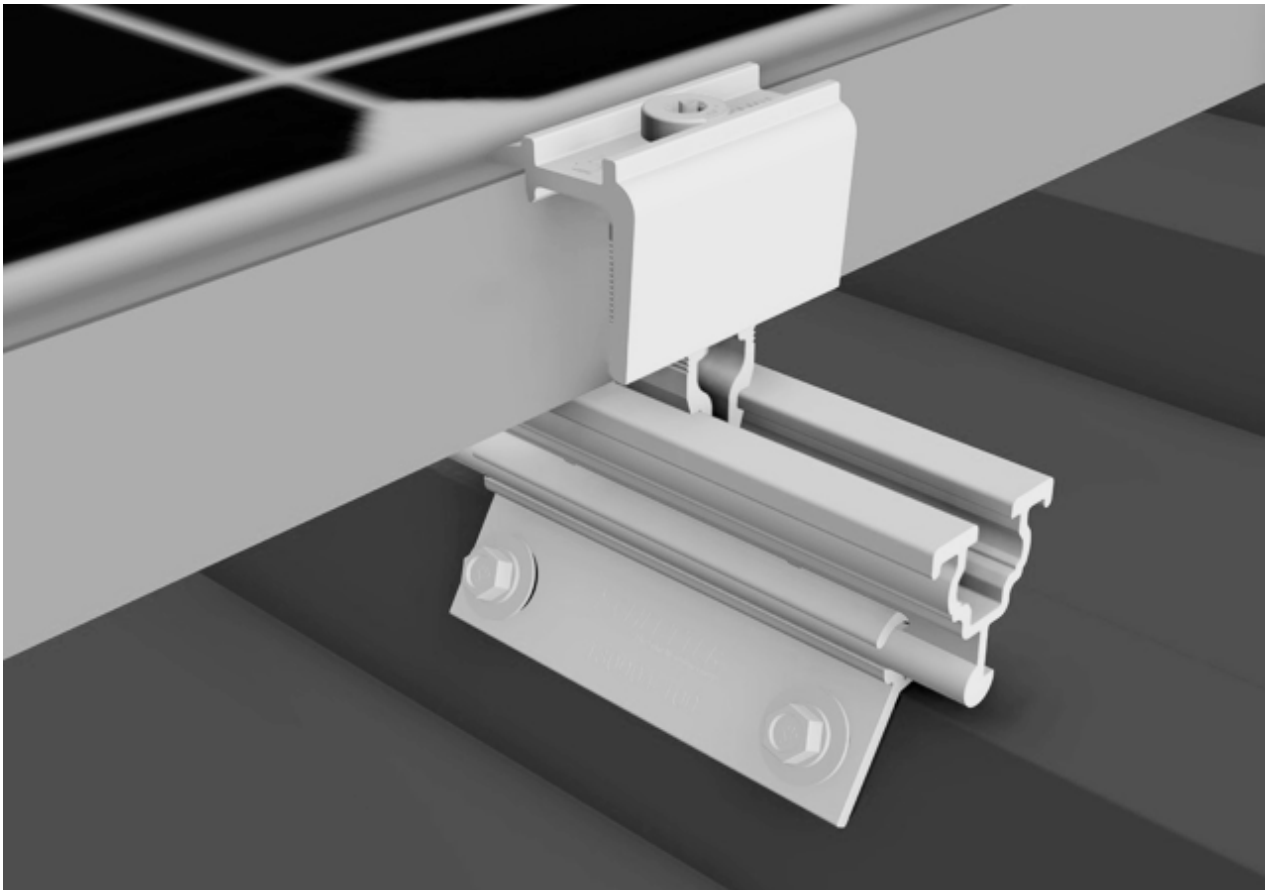
CLAMPFIT

THE COST-OPTIMISED TRAPEZOIDAL SHEET FASTENING SYSTEM FOR STEEL AND ALUMINIUM SHEETS FROM 0.5 MM

Always simpler, always more affordable, universal, faster mounting and, as an option, also as simple and comfortable as possible in planning, ordering and storage – these are the features and advantages that new mounting systems or system parts should have today. The new version of the ClampFit trapezoidal sheet fastening - the consistent further development of ClampFit H - is designed for the horizontal mounting of modules onto trapezoidal sheet roofs and fulfils all these requirements in an exemplary manner. At the same time, it completes the previous universal Schletter fastening range and is just one product in the warehouse.

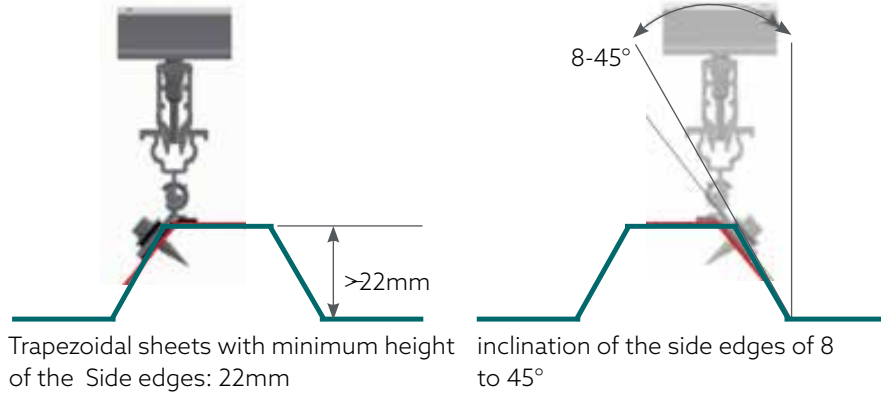
Furthermore, it can also be combined with the universal module clamps Rapid16.

- **Universal use**
- **For all current trapezoidal sheets**
- **Fast mounting**
- **Affordable system price**
- **10-year guarantee**



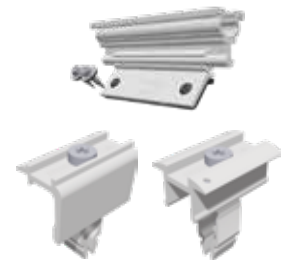
Although this fastening system undercuts previously achievable €/kWp system prices once more, the ClampFit system also corresponds to the strict Schletter quality guidelines: An optimal introduction of force is achieved thanks to the side edge fastening. In this way, even very thin trapezoidal sheets are not overloaded in places. Even the loosening of screws by thermal expansion and load alternation is reliably eliminated in this fastening geometry.

USE



PRODUCT NUMBERS

130004-100	ClampFit
131121-001	middle clamp Rapid ¹⁶ 30 - 40 mm
131101-001	end clamp Rapid ¹⁶ 30 - 40 mm
131121-002	middle clamp Rapid ¹⁶ 40 - 50 mm
131101-002	end clamp Rapid ¹⁶ 40 - 50 mm
131101-003	end clamp Rapid ¹⁶ H 30 - 40 mm



You can find module clamps in a black anodised version in our component overview.

TECHNICAL DATA

MATERIAL System components: Aluminium; Screws: Stainless steel; Seals: EPDM

PLANNING AID Configuration and structural analysis via the Schletter Configurator

STRUCTURAL ANALYSIS Structural analysis according to the current country-specific standards; in Germany DIN EN 1991 (EC1). Depending on the system, 4 fastening points per module. For high wind or snow loads or for large modules, it may be necessary to use more fastening points. In all circumstances, observe the information on the structural analysis!

In the general structural analysis systems, evidence of the holding strength of the roof to the substructure is not included!

Further information is available at www.schletter-group.com

SCHLETTER SOLAR GMBH

Alustrasse 1
83527 Kirchdorf
GERMANY

www.schletter-group.com

