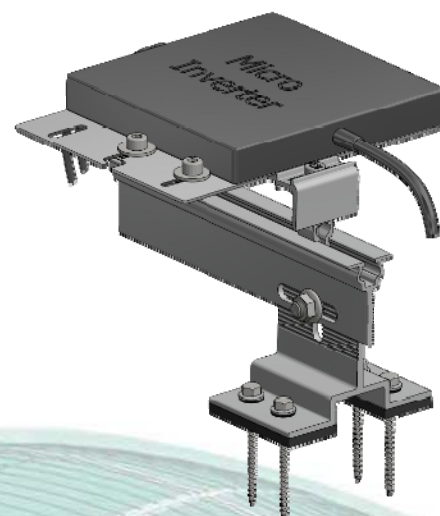
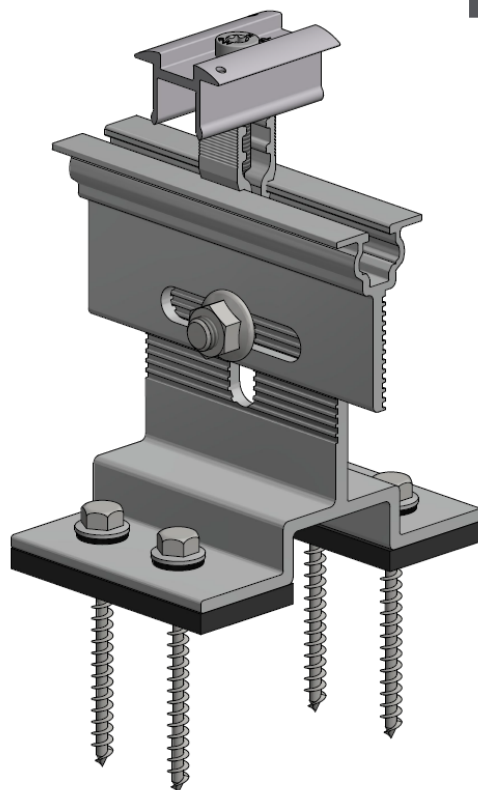
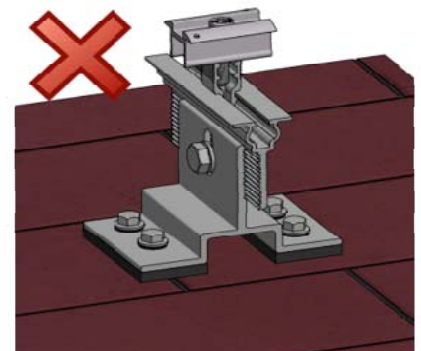
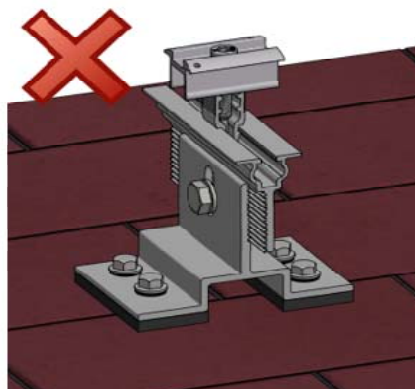
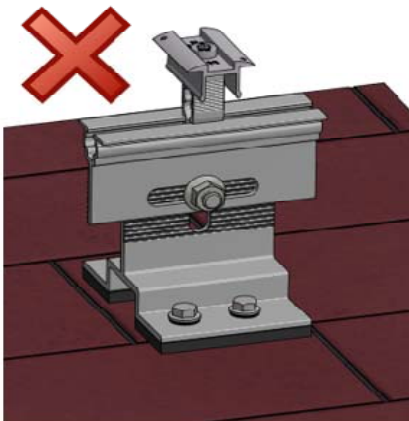
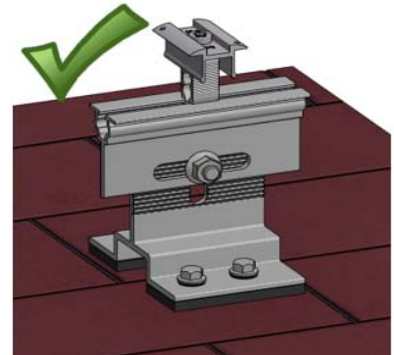
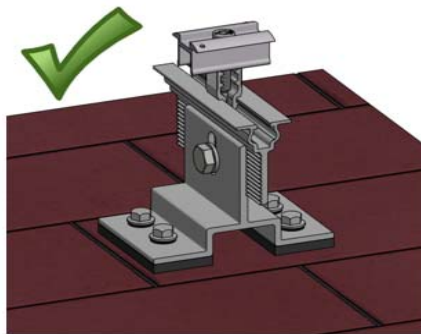
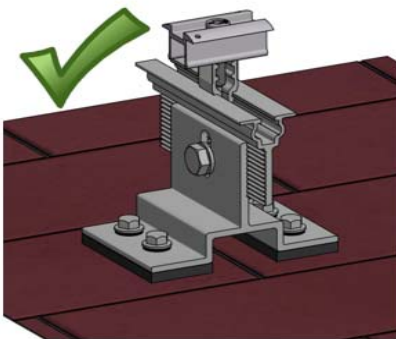
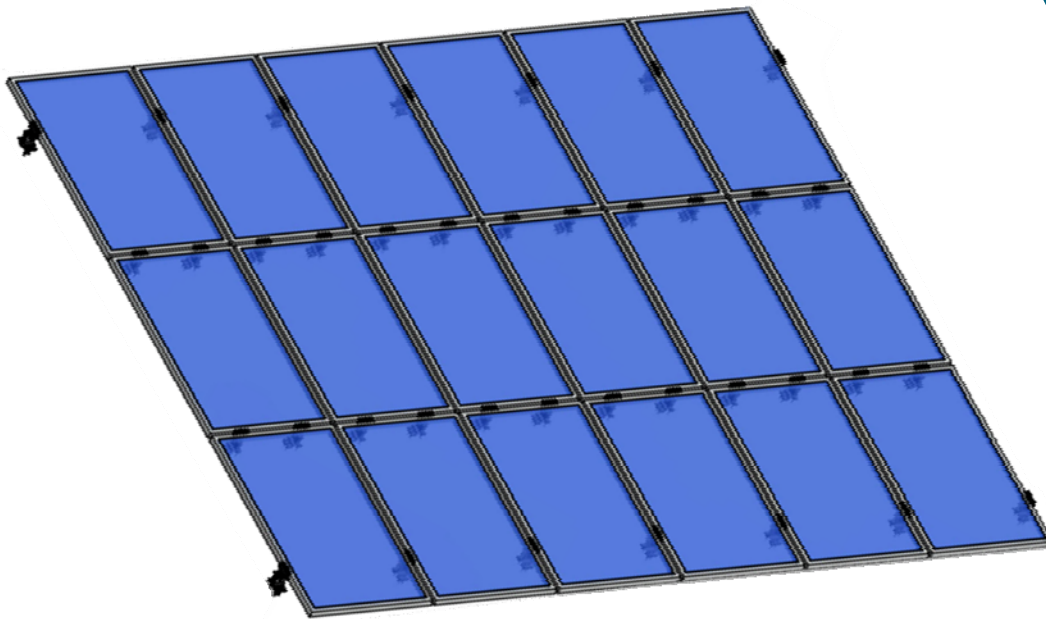


FixRL

PRODUCT SHEET



- **RAIL-LESS**, pre-assembled attachment for asphalt shingle roofs
- **Self-drilling screws** attach directly to OSB, min. thickness 7/16"
- **Conforms to UL 2703 and ULC/ORD Std C1703 (Ed.1), certified to LTR AE-001**
- **Class A** fire rated for type 1 and 2 modules
- **All components** are aluminum or stainless steel
- **Adjustability:** Horizontally up to 48mm/vertically up to 15mm
- **Max. roof tilt 45° , Orientation:** Landscape or Portrait
- **Max. row length 12 m, max. array size 12 x 12 panels**
- **Only one point of grounding** per row/array
- **Pre-installed , adhesive butyl sealing tape, pre-installed sealing washers**
- **Extended rail** for integration of micro inverter, optimizer or cable management
- **25 years** limited manufacturer warranty



To calculate the number of attachments for a specific location, more product information or a free sample, visit www.schletter-group.com or send us an email to rooftopNA@schletter-group.com